

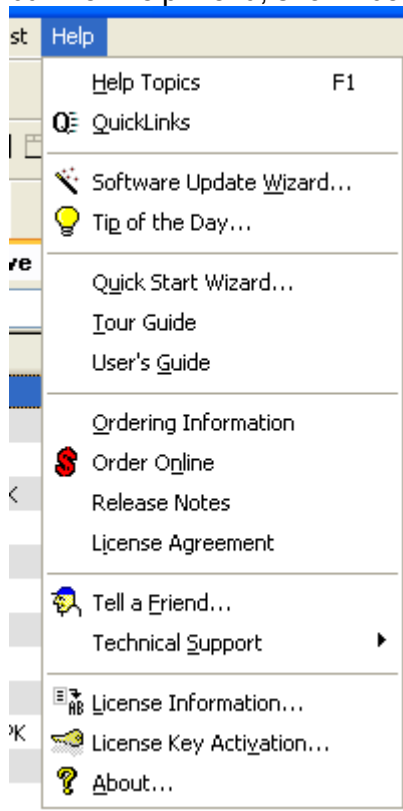
Personal Stock Monitor Review:  
©Bill Dube, 2009

Personal Stock Monitor (PSM) is the Leatherman of stock market chart, portfolio, and communication programs. I say this because the program is intuitive, with a natural ease of use, and a program that no frugal investor should be without. You could spend thousands all the way to nothing for a stock monitoring program. PSM is just one of the many great programs offered by DTLINK Software for under \$50. I have been using PSM for a little over seven years and this is my first year with the new CallabInvest (CI) plug in to PSM. PSM while being feature rich is one of the easiest stock charting programs I have ever used. I may stray away from it from time to time to check out some other alternative, but I always use PSM for my serious stock research, analysis, and picks.

I do not like to reinvent the wheel or reading articles/books that add in a lot of fluff, so I will do my best to keep this short and to the point. Before I do, however, there is a quick side note and personal story in the next paragraph. So if you just want CI and PSM instruction skip the next paragraph.

A few weeks ago I was asked to write this essay on CI and PSM. At the same time I made yet another recommendation for change to the PSM charting module. Just about every change that I have recommended has been added to PSM within a short period of time. I said, "It would be nice to have an arrow in the charting module chart that would take you to the next symbol on your list without having to type it in." This would make it so that when you were in a rush that you would not have to open all your charts cluttering your desktop; instead you would be able to cycle through your stocks using just one chart. Before sending this essay in I was using PSM yesterday and noticed that DTLINK already made the change adding an arrow to bring you up and down your symbol list without having to load another chart. DTLINK is more than willing to work with you with PSM and CI best for all users.

99% of what you need to know about PSM is available in the Help menu. Not only is PSM feature rich, but their help menu, shown below, is also feature rich.



Since 99% of what you need to know about PSM is in Help I am going to take a little time to describe each of the individual components of the help menu.

**HELP TOPICS:** Accessed through the help menu or by pressing F1 Help Topics are in the standard windows help menu format for Personal Stock Monitor. I was very happy to find well defined details for symbols, functions, and workings of PSM. As CollabInvest is new to PSM and more of an add on it is currently not covered in the PSM help menu. You will find that CollabInvest is fairly intuitive requiring little explanation, but help topics alone will probably answer most of your questions.

**QUICKLINKS:** Quicklinks has shortcuts to many features of PSM. Through Quicklinks you can Find a Ticker by Name, Create (ADD) Ticker Symbol, Create Cash Symbol, Create Cash Symbol, Create, Folder. There are also Charting functions, Ticker Settings, toggle ticker bar, and set preferences available through the QuickLinks.

**SOFTWARE UPDATE WIZARD:** This is one of my favorite features of PSM. No longer do you have to remember exactly how to load the updates to your computer program. All you have to do is follow the prompts and your PSM program will check and update itself if necessary.

**TIP OF THE DAY:** Self explanatory. I'd recommend checking it from time to time. I always find out something new when checking tip of the day.

**QUICK START WIZARD:** Use the Quick Start Wizard to help you set up PSM and connect your PSM to the internet and get online quick.

**TOUR GUIDE:** Tour guide is just that. I highly recommend it. Your new version of PSM should default to showing the Tour Guide portion of PSM. This feature as well as most PSM features can be detached by clicking on the top bar of the individual menu and dragging it, or closed by clicking the X in the top right corner.

**USER'S GUIDE:** This is an adobe file that is accessible through your PSM help. It would not be a bad idea to print this out for future reference. Much of PSM is intuitive and changes are made frequently. The changes are always for the better and I have found make PSM sooooo much easier to use.

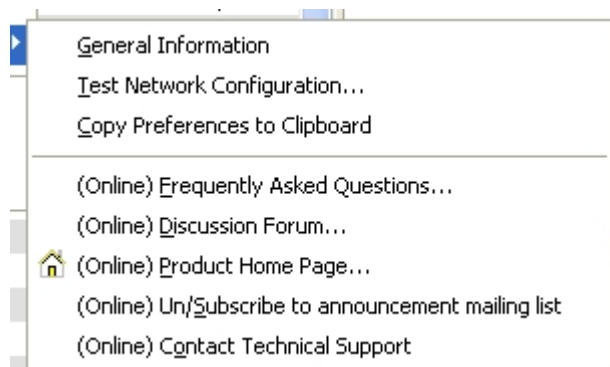
**ORDERING INFORMATION:** This option brings you to an order page. You have the option of ordering PSM Gold for 49.95 or PSM Standard for 29.95 or getting PSM Gold for free with a TrialPay offer through Netflix, Blockbuster, FTD, Best Buy, Staples, or another vendor. All we have to do is complete just one offer and get our item for FREE... WOW another improvement I didn't even know about. Like I said this program and the options are continually being updated.

**ORDER ONLINE:** This feature is the same as Ordering Information.

**RELEASE NOTES:** I thought that it may go back to the first release, but it goes back all the way to December 5,2005. Each time a new release of PSM is made DTLINK does an excellent job of documenting and testing the release. I have found PSM to lack the bugs I find in many of the other windows programs.

**TELL A FRIEND:** This is a quick promo tool that lets you tell your friends about PSM. When you hit next it sends, but will not be clearing your message. You can tell it was sent because your friend's email address disappears.

**TECHNICAL SUPPORT:** This option will bring up another menu for General Information, Test Network Configuration, Coy Preferences to Clipboard and various Online features pictured below.



Anytime I have had trouble with PSM or CollabInvest I have had action within 24 hours and if my problem is not windows related a solution within 48 hours. Forgot to mention that there are many times when I write to DTLINK with a suggestion to support only to find that PSM already has that feature.

**LICENSE INFORMATION:** This will tell if your copy is licensed or not; you also can access your user name and License Key... Once you have your key installed it is a good idea not to mess with it unless DTLINK tells you to change it.

**LICENSE KEY ACTIVATION:** License Key Activation prevents the unauthorized use of your PSM software. This can be done either online or through email. I have done it both ways and would recommend online. ☺

**ABOUT:** This will return what version you are using, who it is licensed to, if it is licensed, and for how long.

That is it for the help menu, and for 99% of PSM. Like I have said before I am not one for reinventing the wheel, so please check out the manual and the help topics for anything else about the mechanics of using PSM.

I am still working on getting the utility of CollabInvest. So far it has been an excellent tool for contacting DTLINK support and development. I also think that in the future as more people use PSM and CollabInvest that collective intelligence of PSM and CI users will be worth checking out. Actually there are features in CI that would take a whole other article to cover in depth. CI is not just a fancy IM tool. Charts and analysis as well as collaboration in the future are all included in CI platform today. As more people use CI it will be a more useful collaboration tool for the serious investor.

Give PSM and CI a trial run; I am sure that you will find that both are useful tools for your investment toolbox...

If you are shopping for a Stock Charting program there many options available to you.